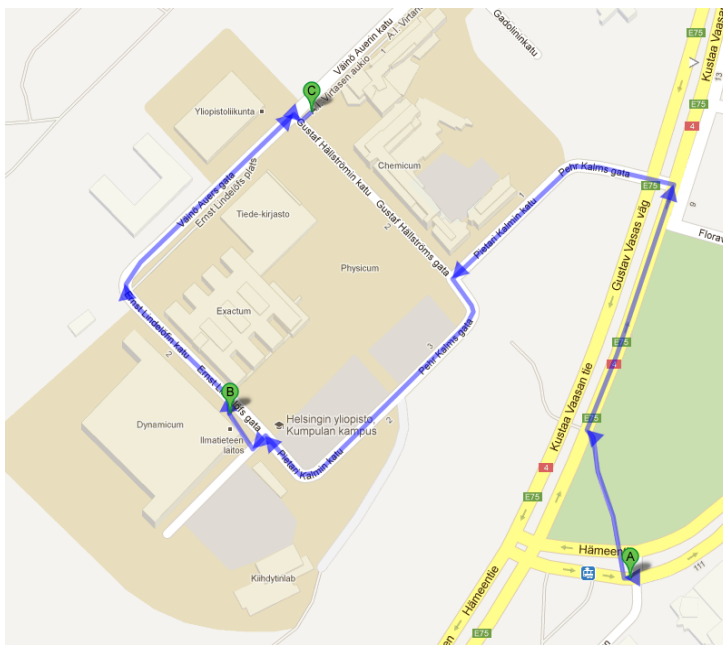
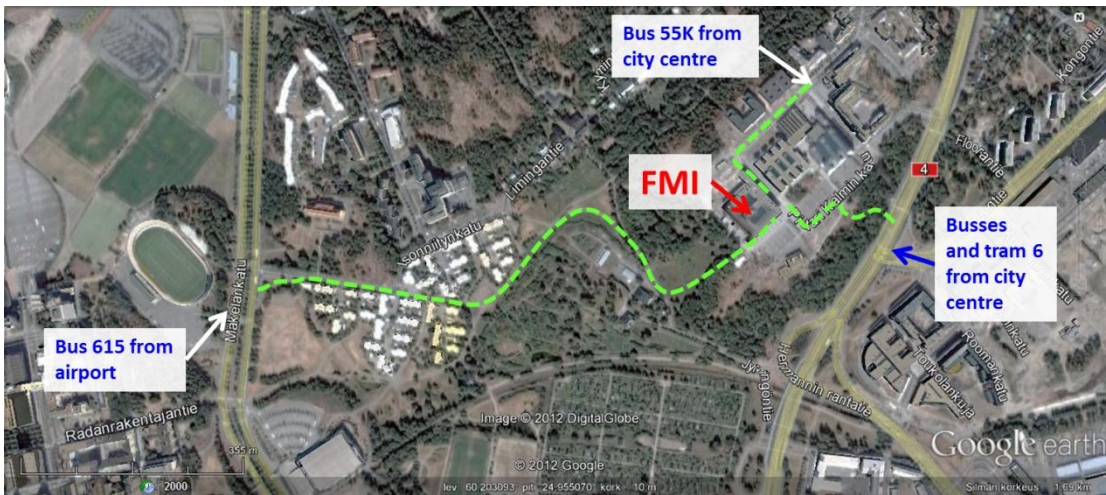


Walking route from Park Hotel (Pohjolankatu 38) to FMI (Erik Palménin aukio 1)



Walking route from Ava Hotel (Karstulantie 6) to FMI Erik Palménin aukio 1



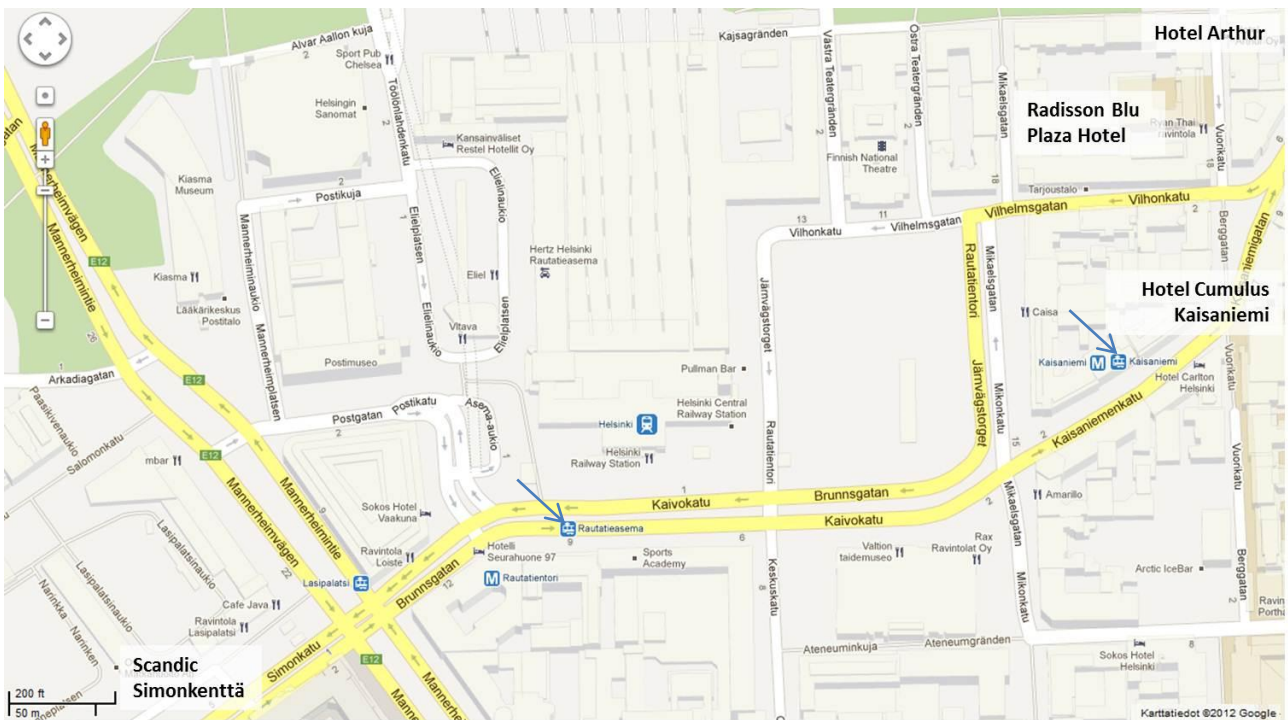
The nearest bus and tram stops and the walking routes to FMI.

FMI is located in Kumpula campus about 4 km north of the Helsinki city centre. The street address of the FMI-building “Dynamicum” is Erik Palménin aukio 1, Helsinki. FMI is easily reached by bus from Helsinki Railway Square

Bus/Tram lines to Dynamicum are:

- ⤴ 55K, 55AK. Bus stop A.I. Virtasen Aukio (symbol C on the campus map above).
- ⤴ 55, 55A, 70, 73, 75, 77, 730-742. Bus stop is near Kumpula campus, Kustaa Vaasantie (near symbol A on the map). Estimated driving time is 10-12 minutes.
- ⤴ 68, 71, 71V, 74N. Bus stop is in front of Arabia shopping centre, Hämeentie 109-111 (symbol A on the campus map). Estimated driving time is 10-12 minutes.
- ⤴ Tram 6 from city centrum towards Arabia, tramp stop is the blue/white symbol on map near symbol A

Map of Helsinki City centrum



Hotel Arthur, Vuorikatu 19

Radisson Blu Plaza Hotel, Mikonkatu 23

Scandic Simonkenttä, Simonkatu 9

Cumulus Kaisaniemi, Kaisaniemenkatu 7

Tram 6 stop ↘